

Carbonhand®

# Quick Start Guide



A simple guide to getting started with Carbonhand

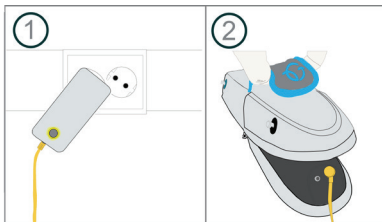
Please see the User Manual for complete instructions and additional information.

# 1. Before First Use

## Charge Carbonhand before use

Connect charger to port on the Power Unit. The battery charges to approximately 75% within 30 minutes and reaches full charge in about 3 hours.

Yellow Light = charging  
Green Light = fully charged

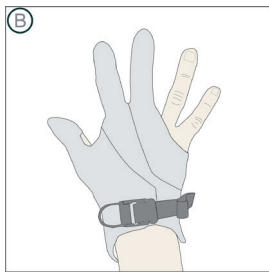
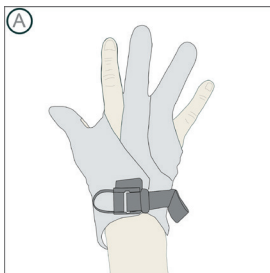


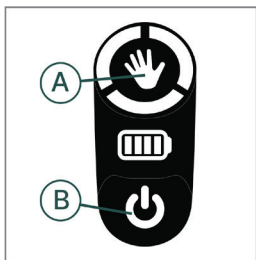
# 2. First Use

## Fit the glove

Put on the glove, choosing either the index and middle fingers or the middle finger and ring finger. Make sure the sensors are snug on fingertips. Press down firmly on the buckle to close.

Use included armstraps to avoid entanglement.





The control pad on the glove allows you to manage key functions and view battery status.

### Power on the system

Press and hold the Power Button (B) on the Control Pad on the glove until the light turns on. Press and hold again to power off.

### Calibrate the glove

Quickly press On/Off button (B) to put system in Pause, press Hand Button (A) for 3 seconds, place your hand on a flat surface within 3 seconds, and wait for the beep indicating calibration is complete.

## 3. Daily Use

**To grasp an object:** Start the movement—sensors detect your effort and add extra force.

**Pause/Resume:** Quickly press the On/Off Button (B).

**Lock Assist:** Quickly press the Hand Button (A) to keep grip engaged; press again to release.

**Switch Profiles:** Press and hold the Hand Button (A) for 2 seconds to switch the glove to the next saved profile.

## 4. Safety

### **Start small**

When beginning to use Carbonhand, wear the glove for short periods of time to get used to the system.

### **Monitor**

Watch for swelling, skin irritation, or discomfort. Remove immediately and resume once symptoms have resolved.

### **Increase gradually**

Extend wearing time as tolerated. It is not unusual to experience some muscle soreness when you start using your hand again.

If you experience any pain or discomfort during use, stop and contact a healthcare professional or Bioservo before resuming.

## 5. Care & Maintenance

### **Protect the glove**

When using the Carbonhand while working outdoors, or other environments where it may get dirty or exposed to water, it is recommended to wear a protective glove over the Carbonhand.

### **Washing the glove**

For small or light stains, handwash the glove using a mild detergent and rinse with water. Air dry only.

For heavier stains, Carbonhand can be machine washed in provided padded bag. *Please see the instructions in the User Manual.*

## 6. Adjusting Settings & Training

### Adjusting the settings

The profiles in Carbonhand can be adjusted by using the Bioservo App. *Please note: Adjust settings only if trained by your therapist.*

### Download the Bioservo app

Download and install the App on Your phone by scanning one of the QR codes below and select install.



Google Play



App Store

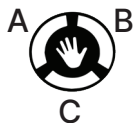
### Further training

Create a free account in the Bioservo Carbonhand Academy to access detailed descriptions, training, and video guides.



Scan the QR code to  
go to the Academy

Below, you can make notes about your profiles as a reminder:



A \_\_\_\_\_

B \_\_\_\_\_

C \_\_\_\_\_



Scan to open the  
User Manual